



中远海运特种运输股份有限公司
COSCO SHIPPING SPECIALIZED CARRIERS CO., LTD.

Company Profile

2018



The total fleet of **COSCO SHIPPING** comprises of 1114 vessels with a capacity of 85.32 million DWT, ranking No.1 in the world. Its container fleet capacity is 1.58 million TEU, ranking the fourth in the world. Its self-owned dry bulk fleet (365 vessels/33.52 million DWT), tanker fleet(120 vessels/17.85 million DWT), general cargo and specialized cargo fleet (3 million DWT), are No.1 in the world in terms of capacity.



COSCO SHIPPING SPECIALIZED CARRIERS CO., LTD. (primitive name COSCO SHIPPING CO.,LTD.), as a vital member of COSCO SHIPPING Group, is the first state-owned ocean shipping enterprise since the founding of the People's Republic of China. COSCO SHIPPING SPECIALIZED CARRIERS CO., LTD. and its subsidiaries own more than 100 vessels, including semi-submersible vessel, heavy lift vessel, multipurpose vessel, pure car carrier, asphalt carrier, RO-RO and log carrier, etc. As China's biggest specialized shipping company, COSCO SHIPPING SPECIALIZED CARRIERS CO., LTD. endeavors to become the greatest competitor in global specialized shipping.



Sustainable / Safety / Environmental

We are consolidating and developing our world leading status in shipping by maintaining a relationship of integrity and trust with our customers, employees and partners, yielding best returns for our shareholders, the society and environment.



Paying high attention to piracy risk

Rampant piracy in Southeast Asia sea area, Gulf of Aden and its neighboring territories poses a continuous threat to ship security.

In views of this threat, COSCO SHIPPING SPECIALIZED CARRIERS CO., LTD. has formulated a set of comprehensive operating instructions in piracy risk prevention. These instructions will become the unitive guidance plan for all ships so that the ships can deal with different emergencies. These instructions include safety instruction of high-risk areas and piracy prevention, instruction of dealing with pirate attack, and instruction of safety hatch and safety island, etc.

All of our ships through high-risk area in the Gulf of Aden have already been fully equipped with safety prevention measures, including joining the marine convoy formation and hiring armed guards to escort ships. Throughout the voyage, COSCO SHIPPING SPECIALIZED CARRIERS CO., LTD. has formulated a set of particular initiatives to continuously track and protect ships, seamen and cargoes.



1

Global Carrier with Sincerity and Creditability

To become the greatest competitor in global specialized shipping and the leader of large-scale engineering project transportation



Far East – Southeast Asia

Far East – Persian Gulf / Red Sea

Far East – Africa

Far East – Europe / Med

Far East – Americas / Australia

Global Carrier with Sincerity and Creditability

Based on Far East, COSCO SHIPPING SPECIALIZED CARRIERS CO., LTD. has achieved the global business network and maintained stable liner service, extending from Far East to Southeast Asia, Europe / Med, Persian Gulf / Red Sea, Africa, Americas and Australia, etc. COSCO SHIPPING SPECIALIZED CARRIERS CO., LTD. is aiming to become the greatest competitor in global specialized shipping and the leader of large-scale engineering project transportation.



Far East – Southeast Asia

Far East – Persian Gulf / Red Sea

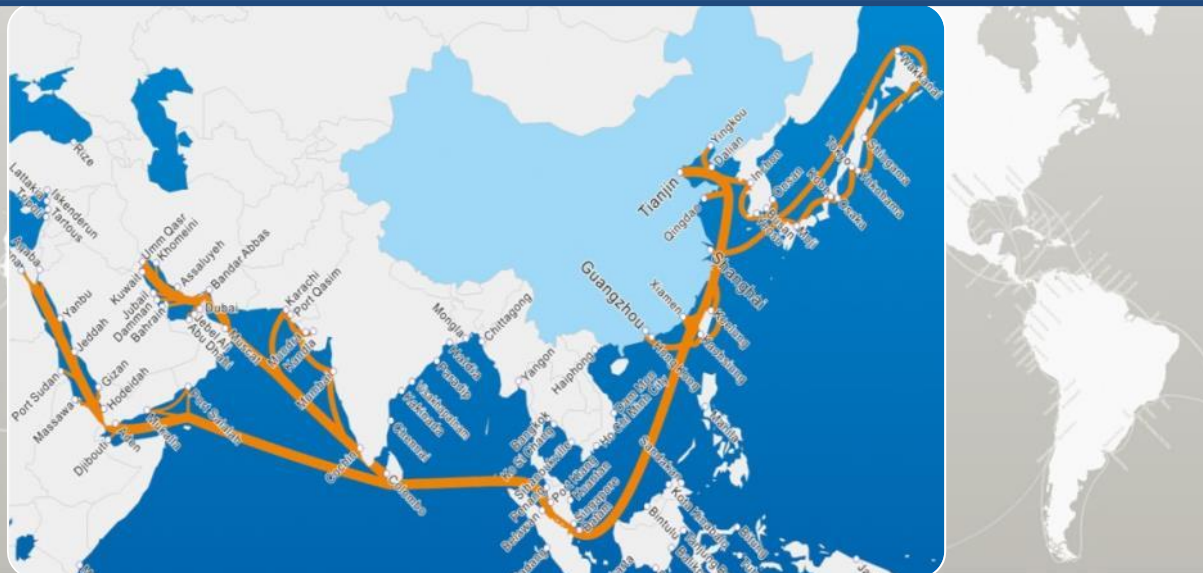
Far East – Africa

Far East – Europe / Med

Far East – Americas / Australia

Far East – Southeast Asia

- Southeast Asian Line includes shipping from the Far East countries as China, Japan and Korea to India, Bengal, Burma and Southeast Asia.
- Schedule interval: 8-10 schedules per month for multipurpose/ heavy lift vessels.
- COSCO SHIPPING SPECIALIZED CARRIERS CO., LTD. operated on this line a long time ago and has achieved punctuality, short schedule intervals and plenty of ports of call. Besides COSCO SHIPPING SPECIALIZED CARRIERS CO., LTD. also extends its shipping line to any destination where the engineering project cargo demands for, ensuring the safe arrival of cargo and completion of project on time.
- At present COSCO SHIPPING SPECIALIZED CARRIERS CO., LTD. is the only company to carry cargoes to Rangoon.



Far East – Southeast Asia

Far East – Persian Gulf / Red Sea

Far East – Africa

Far East – Europe / Med

Far East – Americas / Australia

Far East – Persian Gulf / Red Sea

- The Persian Gulf/ Red Sea Line services the Far East countries as China, Japan and Korea to the Persian Gulf/ the Red Sea.
- Schedule interval: 8-10 schedules to the Persian Gulf per month; 5-6 schedules to the Red Sea per month.
- Experienced operation and familiarity with ports of call facilitate COSCO SHIPPING SPECIALIZED CARRIERS CO., LTD. to offer clients considerate services.



Far East – Southeast Asia

Far East – Persian Gulf / Red Sea

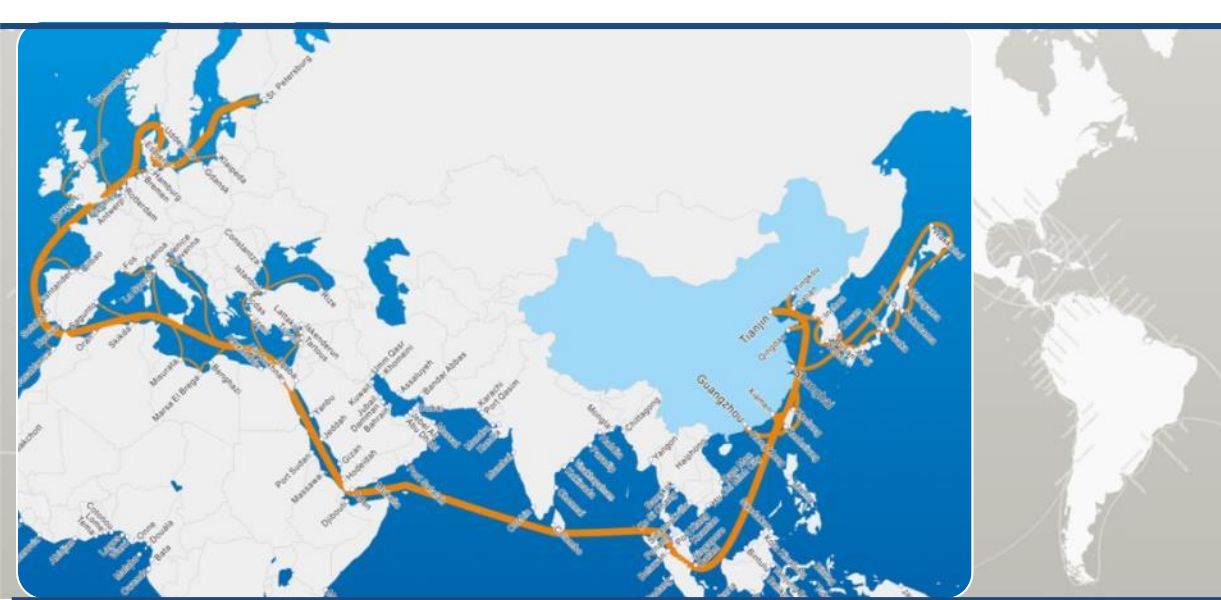
Far East – Africa

Far East – Europe / Med

Far East – Americas / Australia

Far East – Africa

- The African Line covers the Far East countries as China, Japan and Korea to East Africa, South Africa and West Africa.
- Schedule interval: 4-6 schedules per month for Multipurpose vessels
- Among all the carriers servicing African lines, COSCO SHIPPING SPECIALIZED CARRIERS CO., LTD. offers the shortest schedule interval, the most number of ships and the greatest variety of vessel types.



Far East – Southeast Asia

Far East – Persian Gulf / Red Sea

Far East – Africa

Far East – Europe / Med

Far East – Americas / Australia

Far East – Europe / Med

- The European Line starts from the Far East countries as China, Japan and Korea to Mediterranean Sea, the Black Sea, the whole Europe and North Africa.
- Schedule interval: 4-5 schedules per month for multipurpose/ heavy lift vessels
- Open to arrange loading and discharging ports upon clients' requirements



Far East – Southeast Asia

Far East – Persian Gulf / Red Sea

Far East – Africa

Far East – Europe / Med

Far East – Americas / Australia

Far East – Americas / Australia

- The American Line covers the Far East countries as China, Japan and Korea to South America, North America and the Caribbean Areas. This year a new line will come into service starting from the Far East to the West Coast of South America via Australia and New Zealand.
- Schedule interval: 1 schedule to the West Coast of South America per month; 1 schedule to the East Coast of South America per month; 1 schedule to the Caribbean and U.S. Gulf Coast Areas.
- Open to adjust domestic loading ports, call at any port of the U.S. Gulf Coast, East Coast of America, Central and South America, and the Caribbean Areas upon request of clients.

A large blue crane is lifting a heavy, cylindrical object from a truck. The object is suspended by two sets of cables and hooks. The scene is set outdoors with a cloudy sky in the background. The crane's arm extends from the top left towards the center. The truck is positioned at the bottom of the frame, with several workers visible near its front. The overall image has a blue tint.

2

Exceptional Capability

With a fleet in high cargo worthiness and energy saving, COSCO SHIPPING SPECIALIZED CARRIERS CO., LTD. is committed to the transportation of heavy lift cargoes, including drilling rig, engineering vessel, barge, railcar, WTG, machinery, and a complete set of equipment, etc. The company has accomplished plenty of key transport projects such as Qinshan Nuclear Power Plant, Three Gorges Hydropower Station and Sudan Oil Refinery, etc.



Semi-Submersible Vessel

- 8 semi-submersible vessels
- To handle heavy lift and offshore transportation such as drilling platforms, rigs, topsides, modules, barges, cranes and dredgers.
- The new-signed semi-submersible ships prominently excel themselves in technology:
 - Shallow draft, High speed ballast, High speed navigation, Fully open deck and removable buoyant tank, High strength;
DP-2 system: offering accurate offshore positioning and installation.



Heavy Lift Vessel & Multi-Purpose Vessel

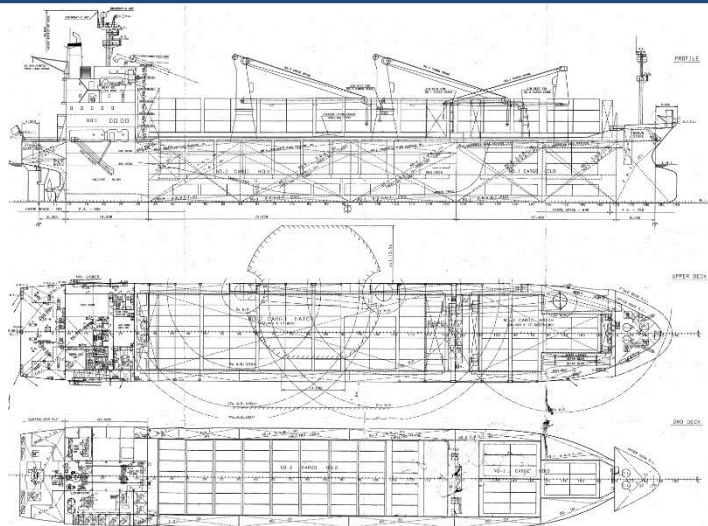
- 64 multipurpose vessels and heavy lift vessels
- The most suitable vessels to carry batch size engineering machinery, equipment and steel on the present market.
 - Hatchway length from 25 up to 64.8 meters;
 - Lifting capacity up to 700 tons;
 - Shallow draft resulting in low dependence on port facility ;
 - Multiple decks enabling high cargo worthiness.



重吊船 HEAVY LIFT VESSEL

船名	SHIP'S NAME	建造时间 BUILT	型长 LOA	型宽 BREADTH	型深 DEPTH	吃水 DRAFT	航速 SPEED	总载重吨 DWT	吊杆能力 SWL	标准箱位数 TEU
大 中	DA ZHONG	1998	153.00	23.00	14.10	9.10	17.60	16957	30X1+250X2 (Comb500)	685
大 华	DA HUA	1998	153.00	23.00	14.10	9.10	17.60	16957	30X1+250X2 (Comb500)	685
大 富	DA FU	1998	153.00	23.00	14.10	9.10	17.60	16957	30X1+250X2 (Comb500)	685
大 强	DA QIANG	1998	153.00	23.00	14.10	9.10	17.60	16957	30X1+250X2 (Comb500)	685

Adjustable tween-deck enables holds to effectively accommodate the cargo of differing dimensions, and promotes each ship's flexibility and efficiency, by which customers' benefit to be maximize with low cost.



● Da Type 17000 Dwt Heavy Lift (4 vessels)

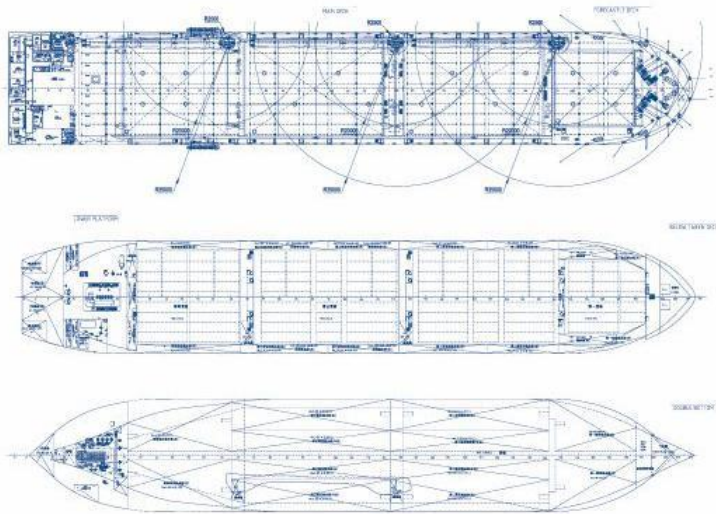
- Year of Built: 1998
- Dead Weight Summer: 16957dwt
- Lifting capacity: 30t * 1 + 250t * 2 Comb. 500t
- Maximum hatchway : 64.8m*17.8m
- Hold /cubic capacity : 22775 m³
- Speed: 15knots



重吊船 HEAVY LIFT VESSEL

船名	SHIP'S NAME	建造时间 BUILT	型长 LOA	型宽 BREADTH	型深 DEPTH	吃水 DRAFT	航速 SPEED	总载重吨 DWT	吊杆能力 SWL	标准箱位数 TEU
大丹霞	DA DAN XIA	2009	166.50	27.40	14.20	10.10	15.20	28450	45X1 + 200X2 (Comb400)	1735
大紫云	DA ZI YUN	2010	166.50	27.40	14.20	10.10	15.20	28450	45X1 + 200X2 (Comb400)	1735
大玉霞	DA YU XIA	2010	166.50	27.40	14.20	10.10	15.20	28450	45X1 + 200X2 (Comb400)	1735
大翠云	DA CUI YUN	2010	166.50	27.40	14.20	10.10	15.20	28450	45X1 + 200X2 (Comb400)	1735
大青霞	DA QING XIA	2010	166.50	27.40	14.20	10.10	15.20	28450	45X1 + 200X2 (Comb400)	1735
大彤云	DA TONG YUN	2011	166.50	27.40	14.20	10.10	15.20	28450	45X1 + 200X2 (Comb400)	1735
大虹霞	DA HONG XIA	2011	166.50	27.40	14.20	10.10	15.20	28450	45X1 + 200X2 (Comb400)	1735
大彩云	DA CAI YUN	2011	166.50	27.40	14.20	10.10	15.20	28450	45X1 + 200X2 (Comb400)	1735

With the completely flat deck (115m*23m) three big barges (113m*11m/unit, 1000mt/unit) can comfortably sit on in two ties.



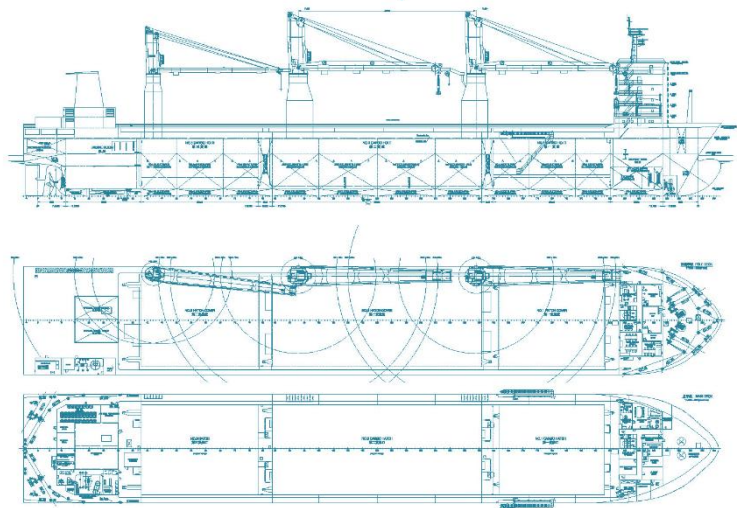
● Da Type II 28000 Dwt Heavy Lift (8 vessels)

- Year of Built : 2009-2011
- Dead Weight Summer : 28450dwt
- Lifting capacity: 45t * 1 + 200t * 2 Comb. 400t
- Maximum hatch way: 51.75m*23.2m
- Speed: 15.20knots



重吊船 HEAVY LIFT VESSEL

船名	SHIP'S NAME	建造时间 BUILT	型长 LOA	型宽 BREADTH	型深 DEPTH	吃水 DRAFT	航速 SPEED	总载重吨 DWT	吊杆能力 SWL	标准箱位数 TEU
大德	DA DE	2013	179.57	28.00	14.80	9.20	15.20	28000	100X1+350X2 (Comb700)	1045
大良	DA LIANG	2013	179.57	28.00	14.80	9.20	15.20	28000	100X1+350X2 (Comb700)	1045
大信	DA XIN	2013	179.57	28.00	14.80	9.20	15.20	28000	100X1+350X2 (Comb700)	1045
大智	DA ZHI	2013	179.57	28.00	14.80	9.20	15.20	28000	100X1+350X2 (Comb700)	1045
大安	DA AN	2013	179.57	28.00	14.80	9.20	15.20	28000	100X1+350X2 (Comb700)	1045
大康	DA KANG	2013	179.57	28.00	14.80	9.20	15.20	28000	100X1+350X2 (Comb700)	1045
大泰	DA TAI	2014	179.57	28.00	14.80	9.20	15.20	28000	100X1+350X2 (Comb700)	1045
大昌	DA CHANG	2014	179.57	28.00	14.80	9.20	15.20	28000	100X1+350X2 (Comb700)	1045



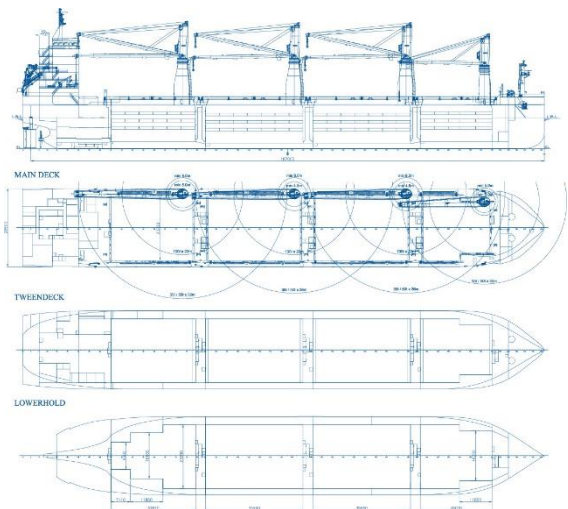
● Da Type III 28000 Dwt Heavy Lift (12 vessels)

- Year of Built : 2013-2017
- Dead Weight Summer : 28000dwt
- Lifting capacity: 100t * 1 + 350t * 2 Comb. 700t
- Speed: 15.20knots



多用途船 MULTI-PURPOSE VESSEL

船名	SHIP'SNAME	建造时间 BUILT	型长 LOA	型宽 BREADTH	型深 DEPTH	吃水 DRAFT	航速 SPEED	总载重吨 DWT	吊杆能力 SWL	标准箱位数 TEU
天福	TIAN FU	2015	189.99	28.50	15.80	11.00	14.00	38100	80X1+100X3 (Comb.200)	1015
天寿	TIAN SHOU	2015	189.99	28.50	15.80	11.00	14.00	38100	80X1+100X3 (Comb.200)	1015
天禄	TIAN LU	2016	189.99	28.50	15.80	11.00	14.00	38100	80X1+100X3 (Comb.200)	1015
天禧	TIAN XI	2016	189.99	28.50	15.80	11.00	14.00	38100	80X1+100X3 (Comb.200)	1015
天真	TIAN ZHEN	2016	189.99	28.50	15.80	11.00	14.00	38100	80X1+100X3 (Comb.200)	1015
天健	TIAN JIAN	2016	189.99	28.50	15.80	11.00	14.00	38100	80X1+100X3 (Comb.200)	1015
天乐	TIAN LE	2016	189.99	28.50	15.80	11.00	14.00	38100	80X1+100X3 (Comb.200)	1015
天祺	TIAN QI	2016	189.99	28.50	15.80	11.00	14.00	38100	80X1+100X3 (Comb.200)	1015



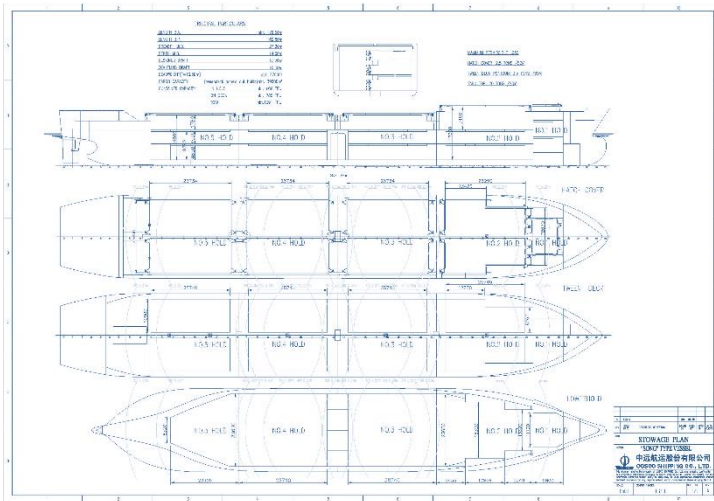
● Tian Type 38000 Dwt Multi-Purpose (10 vessels)

- Year of Built : 2015-2017
- Dead Weight Summer : 38100dwt
- Lifting capacity: 80t * 1 + 100t * 3 Comb. 200t
- Speed: 14.00knots
- MV TIAN HUI & MV TIAN EN CCS Ice Class B1 (LR Ice Class 1A)



多用途船 MULTI-PURPOSE VESSEL

船名	SHIP'S NAME	建造时间 BUILT	型长 LOA	型宽 BREADTH	型深 DEPTH	吃水 DRAFT	航速 SPEED	总载重吨 DWT	吊杆能力 SWL	标准箱位数 TEU
凤凰松	FENG HUANG SONG	2009	179.50	27.20	14.50	10.20	15.10	27000	40X2+45X2(Max 118)	1344
孔雀松	KONG QUE SONG	2010	179.50	27.20	14.50	10.20	15.10	27000	40X2+45X2(Max 118)	1344
麒麟松	QI LIN SONG	2010	179.50	27.20	14.50	10.20	15.10	27000	40X1+45X2+90X1(Max 180)	1344
卧龙松	WO LONG SONG	2010	179.50	27.20	14.50	10.20	15.10	27000	40X1+45X2+90X1(Max 180)	1344
杜鹃松	DU JUAN SONG	2011	179.50	27.20	14.50	10.20	15.10	27000	40X1+45X2+90X1(Max 180)	1344
芙蓉松	FU RONG SONG	2011	179.50	27.20	14.50	10.20	15.10	27000	40X1+45X2+90X1(Max 180)	1344
莲花松	LIAN HUA SONG	2011	179.50	27.20	14.50	10.20	15.10	27000	40X1+45X2+90X1(Max 180)	1344
牡丹松	MU DAN SONG	2012	179.50	27.20	14.50	10.20	15.10	27000	40X1+45X2+90X1(Max 180)	1344
木棉松	MU MIAN SONG	2012	179.50	27.20	14.50	10.20	15.10	27000	40X1+45X2+90X1(Max 180)	1344
紫荆松	ZI JING SONG	2012	179.50	27.20	14.50	10.20	15.10	27000	40X1+45X2+90X1(Max 180)	1344
吉祥松	JI XIANG SONG	2012	179.50	27.20	14.50	10.20	15.10	27000	40X1+45X2+90X1(Max 180)	1344
如意松	RU YI SONG	2012	179.50	27.20	14.50	10.20	15.10	27000	40X1+45X2+90X1(Max 180)	1344
平安松	PING AN SONG	2012	179.50	27.20	14.50	10.20 <td 15.10	27000	40X1+45X2+90X1(Max 180)	1344	
幸福松	XING FU SONG	2012	179.50	27.20	14.50	10.20	15.10	27000	40X1+45X2+90X1(Max 180)	1344



● Song Type 27000 Dwt Multi-Purpose (14 vessels)

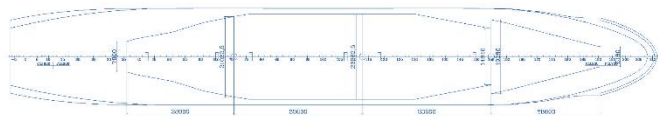
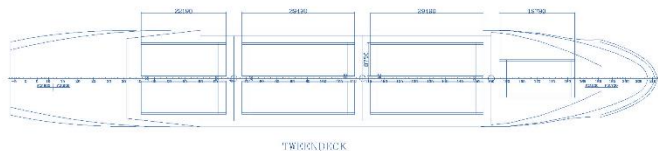
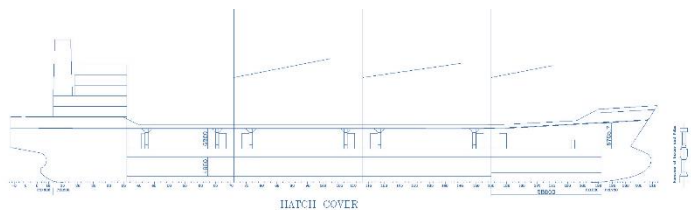
- Year of Built : 2009-2012
- Dead Weight Summer : 27000dwt
- Lifting capacity: 40t * 1 + 45t * 2 + 90t * 1 Max. 180t
- Maximum hatchway : 25.74m*11.1m
- Speed: 15.10knots

Triple decks in hold



多用途船 MULTI-PURPOSE VESSEL

船名	SHIP'S NAME	建造时间 BUILT	型长 LOA	型宽 BREADTH	型深 DEPTH	吃水 DRAFT	航速 SPEED	总载重吨 DWT	吊杆能力 SWL	标准箱位数 TEU
乐鼎	LE DING	1998	169.00	25.20	14.10	9.98	17.60	21728	15X2+40X1	--
乐盛	LE SHENG	1999	169.00	25.20	14.10	9.98	17.60	21728	15X2+40X1	--
乐泰	LE TAI	1999	169.00	25.20	14.10	9.98	17.60	21728	15X2+40X1	--
乐荣	LE RONG	1999	169.00	25.20	14.10	9.98	17.60	21728	15X2+40X1	--
乐昌	LE CHANG	1999	169.00	25.20	14.10	9.98	17.60	21728	15X2+40X1	--
乐民	LE MIN	1999	169.00	25.20	14.10	9.98	17.60	21728	15X2+40X1	--
乐山	LE SHAN	1999	169.00	25.20	14.10	9.98	17.60	21728	15X2+40X1	--
乐锦	LE JIN	1999	169.00	25.20	14.10	9.98	17.60	21728	15X2+40X1	--
乐业	LE YE	1999	169.00	25.20	14.10	9.98	17.60	21728	15X2+40X1	--
乐同	LE TONG	2000	169.00	25.20	14.10	10.00	17.60	21400	15X2+40X1	--



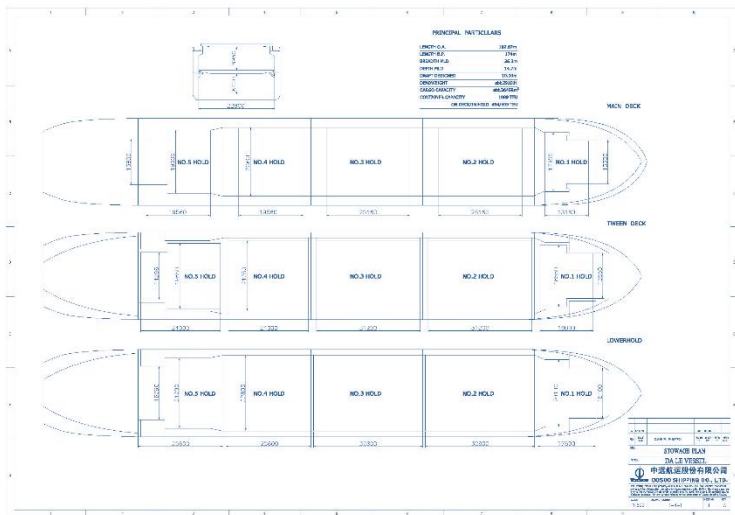
● Le Type I 21000 Dwt Multi-Purpose (10 vessels)

- Year of Built : 1999-2000
- Dead Weight Summer : 21728dwt
- Lifting capacity: 15t * 2 + 40t * 1
- Speed: 17.60 knots



多用途船 MULTI-PURPOSE VESSEL

船名	SHIP'S NAME	建造时间 BUILT	型长 LOA	型宽 BREADTH	型深 DEPTH	吃水 DRAFT	航速 SPEED	总载重吨 DWT	吊杆能力 SWL	标准箱位数 TEU
乐宜	LE YI	2000	182.67	26.20	14.70	10.00	14.00	28450	35X5 (Comb70)	1089
乐里	LE LI	2000	182.67	26.20	14.70	10.00	14.00	28450	35X5 (Comb70)	1089
乐从	LE CONG	2000	182.67	26.20	14.70	10.00	14.00	28450	35X5 (Comb70)	1089
乐和	LE HE	2001	182.67	26.20	14.70	10.00	14.00	28450	35X5 (Comb70)	1089



● Le Type II 28000 Dwt Heavy Lift (4 vessels)

- Year of Built : 2000-2001
- Dead Weight Summer : 28450dwt
- Lifting capacity : 35t * 5 Comb. 70t
- Speed : 14.00 knots



Pure Car Carrier

- Total capacity of over 26,000RT
- become the only domestic pure car carrier in China for ro-ro cargoes and car export, and has operated the export shipping lines to Persian Gulf, Mediterranean Sea and East Coast of South America, etc.



Log Carrier

- Total 13 Vessels , more than 400,000 tons
- It's shipping lines cover various key logs transport area across the globe, and has good reputation on the shipping market of African logs export.



世界一流 亚洲最大

Asphalt Vessel

- Owns and operates 16 asphalt carriers with total tonnage of 96,000 DWTs. It is the biggest asphalt ship-owner in Asia, and has established strategic cooperative relationship with key international companies, such as EXXONMOBIL, SHELL, SK and SARGEANT MARINE, etc.



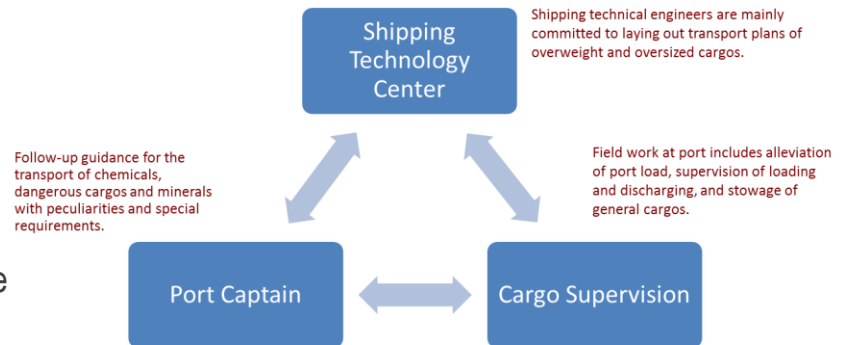
An array of high-quality crew team

- COSCO SHIPPING SPECIALIZED CARRIERS CO., LTD. has 4,200 well-trained crew including 269 captains, 270 chief engineers, 270 chief officers, 900 junior officers. All of them are full-time COSCO SHIPPING employees with long experience at sea, so they are more loyal to the duty, more skillful and more knowledgeable in handling heavy lift and project cargoes.



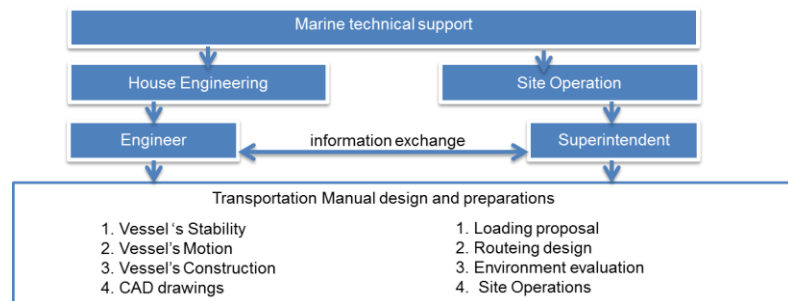
The first Technical Center among the ship owners in Asia

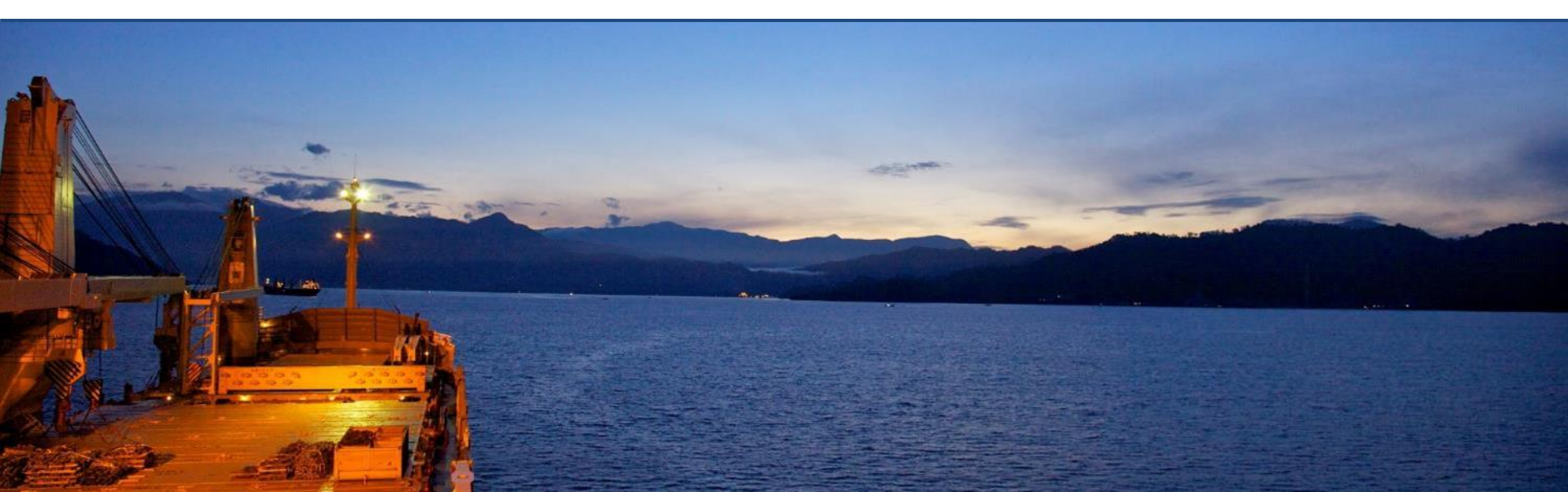
- Setup comprehensive technical center,
 - 36 port captains
 - 25 house engineers
 - 7 cargo supervisors
- Improving technical support to secure high quality transport service



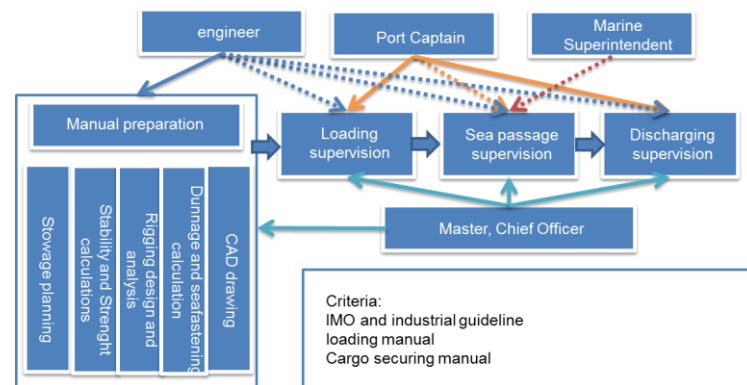


- Scientific cargo stowage , dunnage and securing. Experienced superintendents will attend loading and discharging to provide professional guidance.
 - Marine technic center will make lifting and securing plan for heavy lifts. Superintendents will attend vessels.
 - Use suitable securing points and scientific securing materials and arrangement, to ensure safe cargo securing.
 - Pay attention to cargo protection, use soft securing materials like synthetic web lashings to substitute wire for delicate cargos, to deliver cargos intact.





- The master and Chief Officer will arrange crew to do cargo securing checking, re-fasten and re-securing if necessary, according to SMS.
 - Equipped the vessel with suitable and efficient lifting gears.
 - Use ship's own lifting gears to avoid rough handling, prevent incorrect way of discharging so as to deliver cargos in good condition.





3

Excellent Service

With global marketing network and excellent management system, COSCO SHIPPING SPECIALIZED CARRIERS CO., LTD. has been transforming into Full Logistics Service, and engaged in Transportation & Installation Service. The company has paid great efforts on advanced technology development, and provided tailor-made solution for different clients.

第一类、爆炸物

1.1. 整体爆炸物 1.2. 爆炸物 1.3. 爆炸物
1.4. 一般爆炸物 1.5. 不能爆炸物

第二类、压缩气体和液化气体

2.1. 易燃气体 2.2. 不燃气体 2.3. 有毒气体

第三类、易燃液体

3.1. 低闪点液体 3.2. 中闪点液体 3.3. 高闪点液体

第四类、易燃固体、自燃物品和遇湿易燃物品

4.1. 易燃固体 4.2. 自燃物品 4.3. 遇湿易燃物品

第五类、氧化剂和有机过氧化物

5.1. 氧化剂 5.2. 有机过氧化物

第六类、有毒品

6.1. 剧毒品 6.2. 毒品

第七类、放射性物品

7.1. 一级放射性物品 7.2. 二级放射性物品 7.3. 三级放射性物品

第八类、腐蚀品

8.1. 酸性腐蚀品 8.2. 碱性腐蚀品 8.3. 其它腐蚀品

第九类、杂类

9. 杂类

Transport of Hazardous Cargoes

- Our company vessels can carry from 1 to 9 kinds of Hazardous Cargoes according to the 《International Maritime Hazardous Cargoes Regulations》 .
- Our company's professional managers have years of experience in the management of Hazardous Cargoes and we have a comprehensive safety management system.



Typical Case of Semi-submersible Transport Service

- Float Over by DP2
- Offshore Structures
- Dredger & barge
- Drilling Rigs
- Onshore Structures



Transport of Coal Fire & Nuclear Power Plants

- **Features:** High cargo value; plenty of heavy pieces which are irreplaceable and shall be protected against shock, collision and large angle inclination; strict loading & discharging requirements.
- **Loading & discharging requirements:** Overweight cargos such as rotor, air tank & transformer require vessels to be provided with large hatches & enormous lifting capacity.



Transport of Windmills

- **Features:** High cargo value; great length with mechanical arms stretching out for 45 m; easy to be damaged without packing; no piling up upon main engine/ with strict demands for loading & discharging.
- **Loading & discharging requirements:** Vessels must be provided with long & large hatches.



Transport of Railway Carriages

- **Features:** Long, without packing; fragile, no piling up.
- **Loading & discharging requirements:** Ship cranes are provided with vast outreach and lifting capacity; they normally require wharf rails to lift on/lift off.



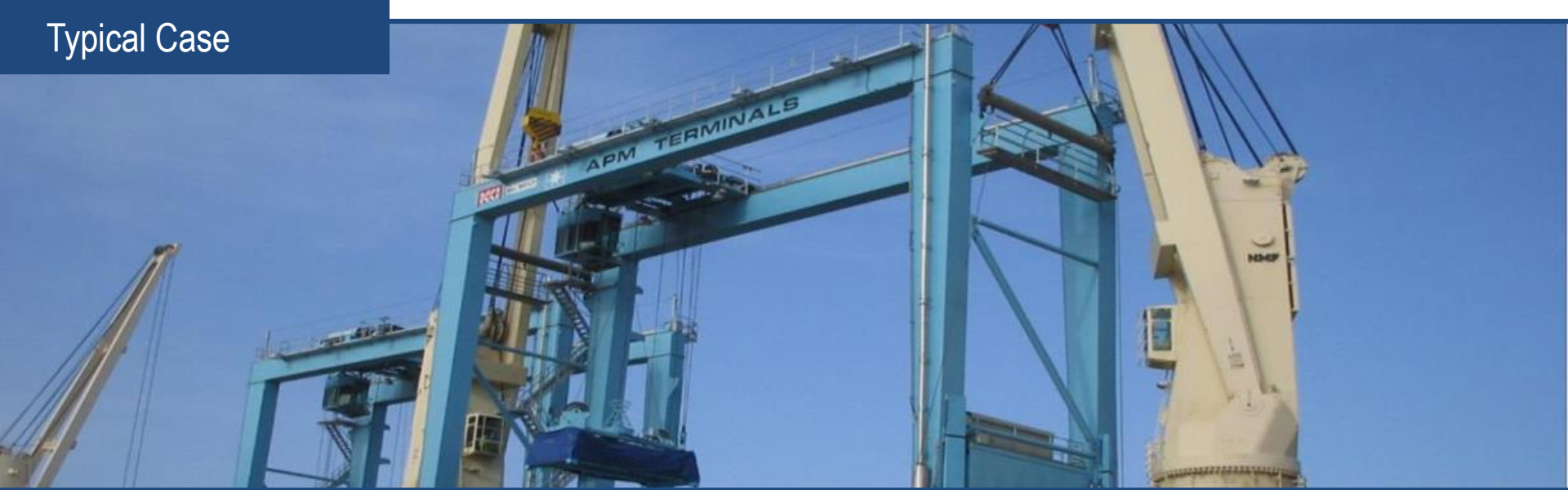
Transport of Petrochemical Equipment

- **Features:** High in cargo value, irregular or uneven but mostly in can or semi-moon shape; petroleum casing has extremely strict loading & discharging requirements and allows no wear & tear on the sheath & interface.
- **Loading & discharging requirements:** Cargos like petroleum casing demand good hold type, long hatch, especially cautious lifting, and allow no scrape & damage on the sheath & interface.



Transport of Cement Mill

- **Features:** High in cargo value, irregular or uneven but mostly in can shape.
- **Loading & discharging requirements:** Cargos like these demand good hold type, long hatch, especially cautious lifting, and allow no scrape or pressing.



Transport of Offshore Crane

- **Features:** Valuable heavy cargo, lifted as a whole; especially requirements on the cribbing / dunnage, no pilling and easy to be damaged due to no packing.
- **Loading & discharging requirements:** Vary size of slings to be used, the center of gravity must be ascertained prior to lift; as well as the lifting points.



Transport of Engineering Machinery

- The multipurpose Vessel and Heavy Lift Vessel of COSCO SHIPPING SPECIALIZED CARRIERS CO., LTD. features multi-deck, box-shape hold, and flat deck. They are suitable for cargo loading/discharging and lashing, effectively avoid the damage of cargoes, and meet all the technical requirements for the transportation of engineering machinery. They are suitable for mass quantities of engineering machinery shipments.



Transport of General Cargoes

- The lifting capacity of multipurpose vessel of COSCO SHIPPING SPECIALIZED CARRIERS CO., LTD. is up to 30-180 tons, and the vessels are characterized in multi-deck, box-shape hold, and flat deck. They are suitable for cargo loading/discharging and lashing, and can handle cargoes under various conditions.



中远海运特种运输股份有限公司
COSCO SHIPPING SPECIALIZED CARRIERS CO., LTD.

Thanks !

